



San Joaquin Valley Regional Planning Agencies' Directors' Committee

Meeting Agenda

Thursday, July 13, 2023

Time: 10:00 a.m.

Meeting ID: 879 9465 7535

Passcode: 832104

<https://us02web.zoom.us/j/87994657535?pwd=WIhvcndvaE1JUzFWenR5SHBHTU5ZUT09>

Phone only: 1 (669) 900-9128

TRANSFER OF CHAIR AND VICE-CHAIR RESPONSIBILITIES TO TED SMALLEY AND TONY BOREN

APPROVAL OF MINUTES

Enclosure

1. June 1, 2023, Directors' Meeting Ted Smalley

DISCUSSION/ACTION ITEMS:

2. RTP/Sustainable Communities Strategies/Air Quality
Update and discussion Ryan Niblock
3. Budget, Policy, and Legislative Updates
a. California Gus Khouri
b. Federal Jen Covino
4. Directors' Retreat, October 9-10, 2023
Update and discussion Ted Smalley
5. Valleywide Household Travel Survey
Presentation of Survey Results Kristine Cai

Tulare County
Association of
Governments
Ted Smalley - Chair

Fresno
Council of
Governments
Tony Boren - Vice Chair

Kern
Council of
Governments
Ahron Hakimi

Madera County
Transportation
Commission
Patricia Taylor

(559) 266-6222
(559) 314-6015 (Fax)



<http://sjvcogs.org>



Stanislaus
Council of
Governments
Rosa Park

Merced County
Association of
Governments
Stacie Guzman

Kings County
Association of
Governments
Terri King

San Joaquin
Council of
Governments
Diane Nguyen

210 N Church St. Suite B
Visalia, CA 93291

6. SJV REAP Program
Receive update

Michael Sigala &
Robert Phipps

INFORMATIONAL ITEMS

The following items are for informational purposes and require no action or vote. Listed individuals will provide a brief verbal update at the meeting.

- | | |
|---|-----------------------------|
| 7. Caltrans Directors' Report | Diana Gomez/Dennis Agar |
| 8. California High Speed Rail | Garth Fernandez/Toni Tinoco |
| 9. San Joaquin JPA for Passenger Rail | Dan Leavitt |
| 10. TradePort California | Simran Jhutti |
| 11. San Joaquin Valley Air Pollution Control District | Tom Jordan |
| 12. MioCar Car Sharing | Michael Sigala |
| 13. California Partnership for the San Joaquin Valley | Eduardo Gonzalez |

OTHER ITEMS

14. Director Items

15. Public presentations for items not on the agenda.

This portion of the meeting is reserved for persons wishing to address the Committee on items within its jurisdiction but NOT on this agenda. Unscheduled comments may be limited to three minutes. The public may comment on listed agenda items as they are considered.

ADJOURN MEETING

Directors only closed session if necessary.

Next Directors' Meeting: Thursday, August 3, 2023

Americans with Disabilities Act (ADA) Accommodations The meeting room and restrooms are ADA accessible. Representatives or individuals with disabilities should contact the SJV Regional Planning Agencies at (559) 266-6222, at least three days in advance, to request auxiliary aids and/or translation services necessary to participate in the meeting. At this time, most meetings are conducted via Zoom.



Meeting Minutes

Thursday, June 1, 2023

ITEM 1

Time: 10:00 a.m.

Meeting Location:

Zoom Conference

Directors	MPO
Diane Nguyen – Chair	San Joaquin Council of Governments
Ted Smalley – Vice Chair	Tulare County Association of Governments
Tony Boren	Fresno Council of Governments
ABSENT - Stacie Guzman	Merced County Association of Governments
Rosa Park	Stanislaus Council of Governments
Patricia Taylor	Madera County Transportation Commission
Terri King	Kings County Association of Governments
ABSENT - Ahron Hakimi	Kern Council of Governments

Please see Appendix A for a list of other attendees

APPROVAL OF MINUTES

1. May 4, 2023, Directors' Meeting

Diane Nguyen

There was a motion to approve the May 4, 2023, Directors' Committee minutes.

First Motion: Ted Smalley

Second Motion: Terri King

Motion Carried

San Joaquin
Council of
Governments
Diane Nguyen - Chair

Tulare County
Association of
Governments
Ted Smalley - Vice Chair

Kern
Council of
Governments
Ahron Hakimi

Madera County
Transportation
Commission
Patricia Taylor

(559) 266-6222
(559) 314-6015 (Fax)



<http://sjvcogs.org>



Stanislaus
Council of
Governments
Rosa Park

Merced County
Association of
Governments
Stacie Guzman

Kings County
Association of
Governments
Terri King

Fresno
Council of
Governments
Tony Boren

555 E Weber Avenue
Stockton, CA 95202

DISCUSSION/ACTION ITEMS:

2. RTP/Sustainable Communities Strategies/Air Quality

R. Niblock

Ryan Niblock noted a CRRSAA Act recession discussion item with Caltrans HQ potentially affecting transportation projects throughout California, including STIP projects. Caltrans and CTC are taking the lead on this item and there is a meeting on Friday (June 2nd) where more information will be made available.

The 2022 SCSs are still under review with an upcoming June CTC board meeting which could impact projects on funding lists. He noted land use as more significant than transportation projects in terms of GHG reductions in the SCS modeling.

Funding sanctions from the FIP were noted. A project list template has been developed and was circulated by SJ COG. There are a lot of questions about projects partially underway that Mr. Niblock is working on. Tom Jordan, SJVAPCD, added the contingency FIP submittal is still pending but headed in the right direction.

3. Budget, Policy and Legislative Updates

State of California

G. Khouri

Gus Khouri reported this the last week to get bills off the floor and the state budget needs to be signed by June 15th. The current budget deficit has increased to \$31.5 billion, but the actual number will not be known until the fall of 2023. The Transit Fiscal Cliff is still an active item. Last year, there was \$4 billion available to supplement transit funding. This year, FY 23-24 it's \$1 billion, then \$500 million in the next FY, then \$500 million the following FY. There is \$2.3 billion that needs to be used for infrastructure. AB 6 is now a two-year bill. AB 7, which codifies executive orders for IJJA and CAPTI, needs comments from the valley in terms of VMT reductions. AB 985 (air district) was moved off the house floor and is headed to the senate.

Washington D.C.

D. Gellman

David Gellman noted the debt ceiling bill that was passed in the legislature last night. The bipartisan budget agreement would cap federal discretionary spending for non-defense items for FY 2024 at FY 2023 levels, and it would suspend the debt ceiling until January 2025. Community Project Funding items will now be back on the table. A list of the earmarks from the Valley were provided to the group in the agenda packet.

4. Regional Policy Council Meeting, June 23, 2023

M. Sigala

Michael Sigala reviewed the draft agenda items and solicited input from the group. Ted Smalley requested an update on the SR 99 Multimodal Corridor Study, and the competitive grant programs funding to the Valley.

5. SJV REAP Program

R. Phipps/M. Sigala

Robert Phipps noted HCD is still silent about the last round of REAP funding of \$8.7 million. He reiterated that HCD is ok with providing up to 50 percent of the available remaining funding, roughly \$4.35 million. The RHNA Insights GIS tool licensing is now being contracted for jurisdictions interested in a license. Michael Sigala provided a draft agenda for the upcoming REAP Committee Meeting on June 23rd and solicited comments.

6. Valleywide Overall Work Program, FY 2023-24

M. Sigala

Michael Sigala requested approval in concept for the overall work program. Ted Smalley requested the SR 99 Multimodal Corridor Study and coordination with CARB staff for SCS be highlighted in the document. He made the motion with these additions.

First Motion: Ted Smalley
Second Motion: Tony Boren
Motion Carried

7. FY 2023-24 Meeting Calendar

M. Sigala

Michael Sigala highlighted some of the significant dates for the coming fiscal year and requested a motion to approve.

First Motion: Ted Smalley
Second Motion: Tony Boren
Motion Carried

INFORMATIONAL ITEMS

8. Caltrans Directors' Report

D. Gomez/D. Agar

Marlon Regisford, District 10, noted the success of the Clean CA grant program, particularly for District 6. For the SR 99 Multimodal Corridor Study, Marlon noted the contract is being approved within the next two weeks. A kick off meeting will be scheduled within the next six weeks.

9. California High Speed Rail

T. Tinoco

Toni Tinoco noted two new grade separations opened in Kings County. Station design meetings are ongoing in several counties. AB 501 (GHG reduction fund to water instead of HSR) failed in the assembly. HSR received the WTS national award for promoting women in transportation last week.

10. San Joaquin JPA for Passenger Rail

D. Leavitt

The next SJJPA Board meeting is July 21st. Madera Station and ACE (Ceres to Turlock) will be seeking state and federal funding. Dan introduced Michael Hanebut, a new Senior Planner.

11. TradePort California

S. Jhutti

Simran Jhutti noted the state funding is yet to be announced.

12. San Joaquin Valley Household Travel Survey

K. Cai

Kristine Cai noted the survey is over and the consultants will present the results to Directors at their July meeting.

13. San Joaquin Valley Air Pollution Control District

T. Jordan

No report provided.

14. MioCar EV Car Sharing

M. Sigala

15. No report provided.

16. California Partnership for the San Joaquin Valley

E. Gonzales

No report provided.

OTHER ITEMS

17. Director Items

Rosa Park introduced Jose Luis Casares as the new Director of Project Delivery at StanCOG.

18. Public Presentations for Items not on the Agenda

No public comment.

Meeting adjourned at approximately 11:13 A.M.

Appendix A – Additional Meeting Participants

Individual	Organization
Kim Anderson	San Joaquin Council of Governments
Roberto Brady	Tulare County Association of Governments
Rob Ball	Kern Council of Governments
Kristine Cai	Fresno Council of Governments
Jose Luis Caceres	Stanislaus Council of Governments
Sabrina Bradbury	CalCOG
Suzanne Cambell	Kern Council of Governments
Steve Dial	San Joaquin Council of Governments
Elizabeth Forte	Merced County Association of Governments
David Gellman	Simon & Company
Elisabeth Hahn	Stanislaus Council of Governments
Michael Hanebutt	SJJPA
Bill Higgins	CalCOG
Simran Jhutti	Fresno Council of Governments
Tom Jordan	SJVAPCD
Ben Kimball	Tulare County Association of Governments
Gus Khouri	Khouri Consulting
Dan Leavitt	SJJPA
Ryan Niblock	San Joaquin Council of Governments
Robert Phipps	Fresno Council of Governments
Meg Prince	Merced County Association of Governments
Marlon Regisford	Caltrans District 10
Michael Sigala	Valleywide Coordinator, Sigala Inc
Monica Streeter	Stanislaus Council of Governments
Linda Urata	Kern Council of Governments

July 2023

Presented by: Melanie Munroe



2022 San Joaquin Valley Household Travel Survey

Agenda

Topics

Study Overview

Methodology

Data Collection Summary

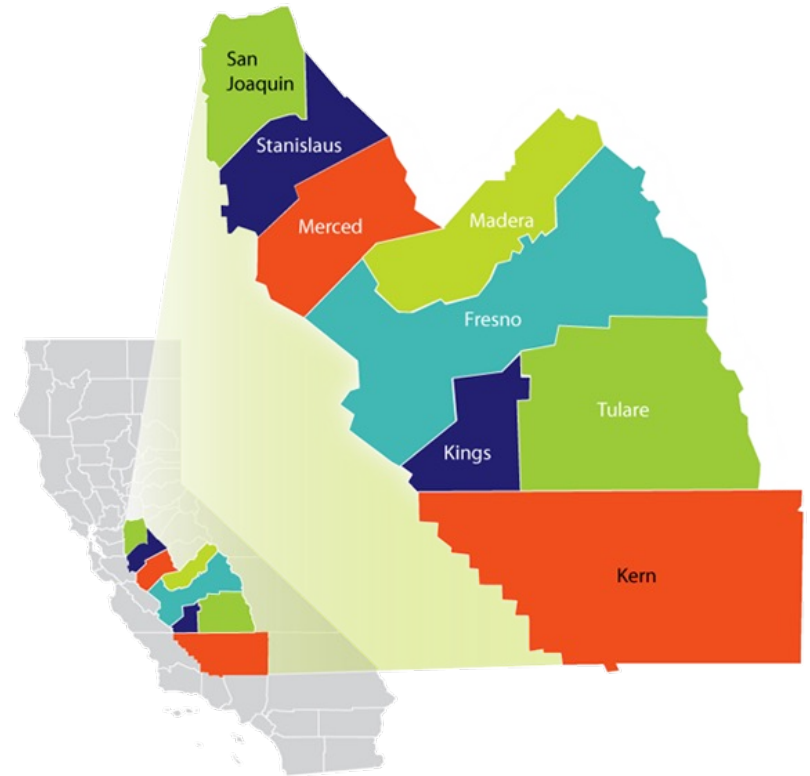
Key Survey Results

Questions

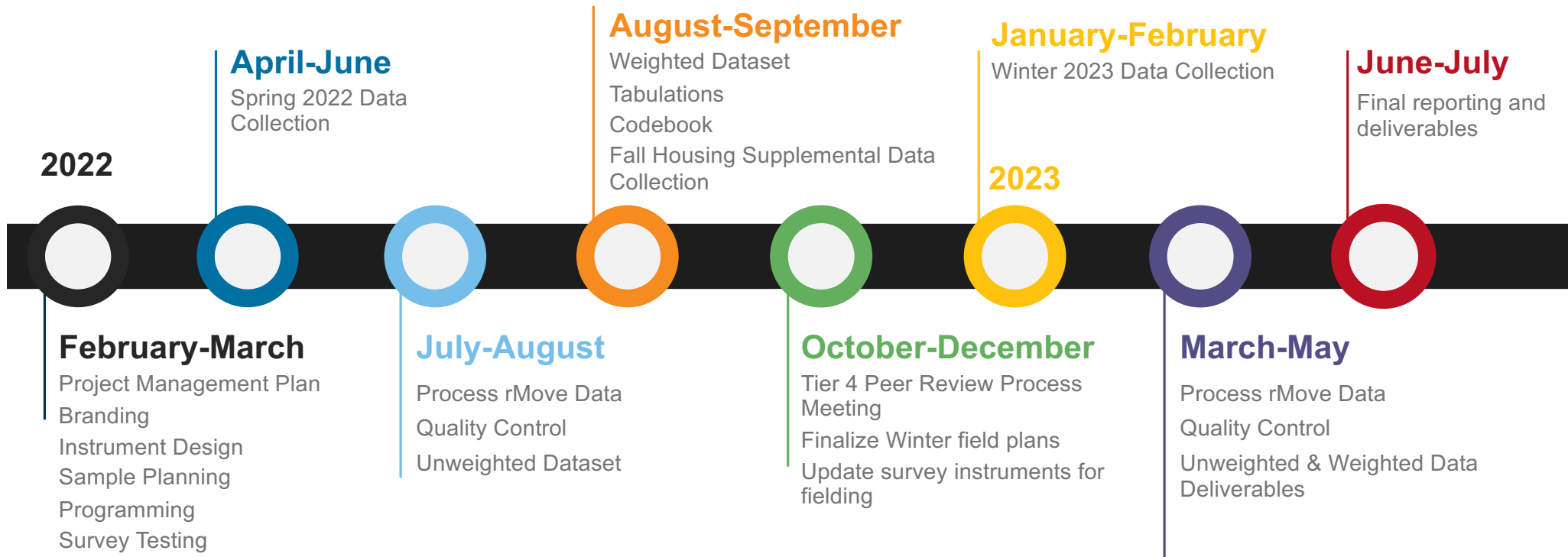


Study Overview

- Collaboration between the eight Metropolitan Planning Organizations (MPOs) in the region led by Fresno Council of Governments (COG).
- Overall goal was to collect representative data from at least 6,850 households in the region to support regional transportation planning priorities and modeling requirements.
- Data collection was scheduled to take place in spring 2022, with fall 2022 contingency dates. Due to lower-than-expected survey response, we finished data collection in February 2023.



Project Timeline



Methodology



Sampling Methodology



Address-based sampling was the primary method for the HTS sample

Most of the sample recruitment was accomplished through address-based sampling (ABS), a type of probability sampling, with a focus on reaching county-level targets in collaboration with the Valley MPOs.

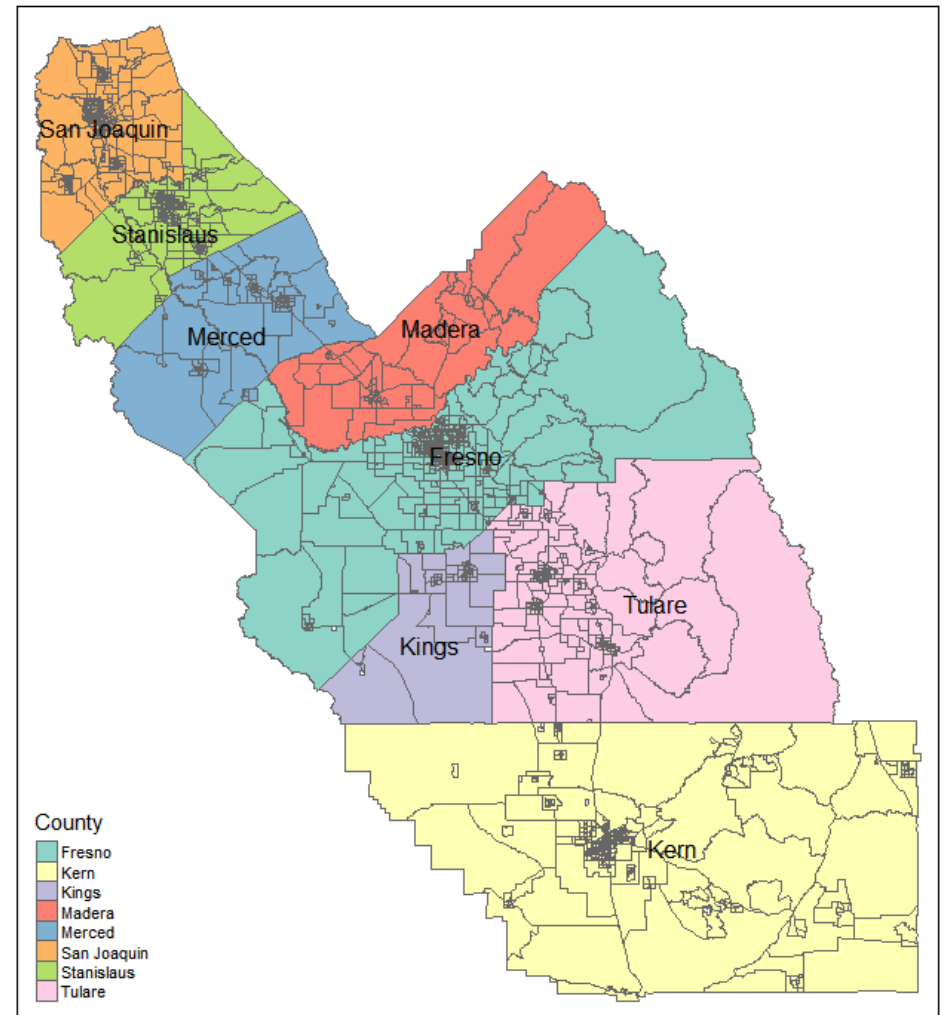


Supplemental (non-probability) sample frame

Supplemental sampling methods, primarily non-probability methods, were employed during all waves of data collection to improve survey representation. The supplemental sample included targeted outreach to hard-to-survey populations through transit rider email lists, local housing authorities, support from Nichols Research, a market research firm based in California.

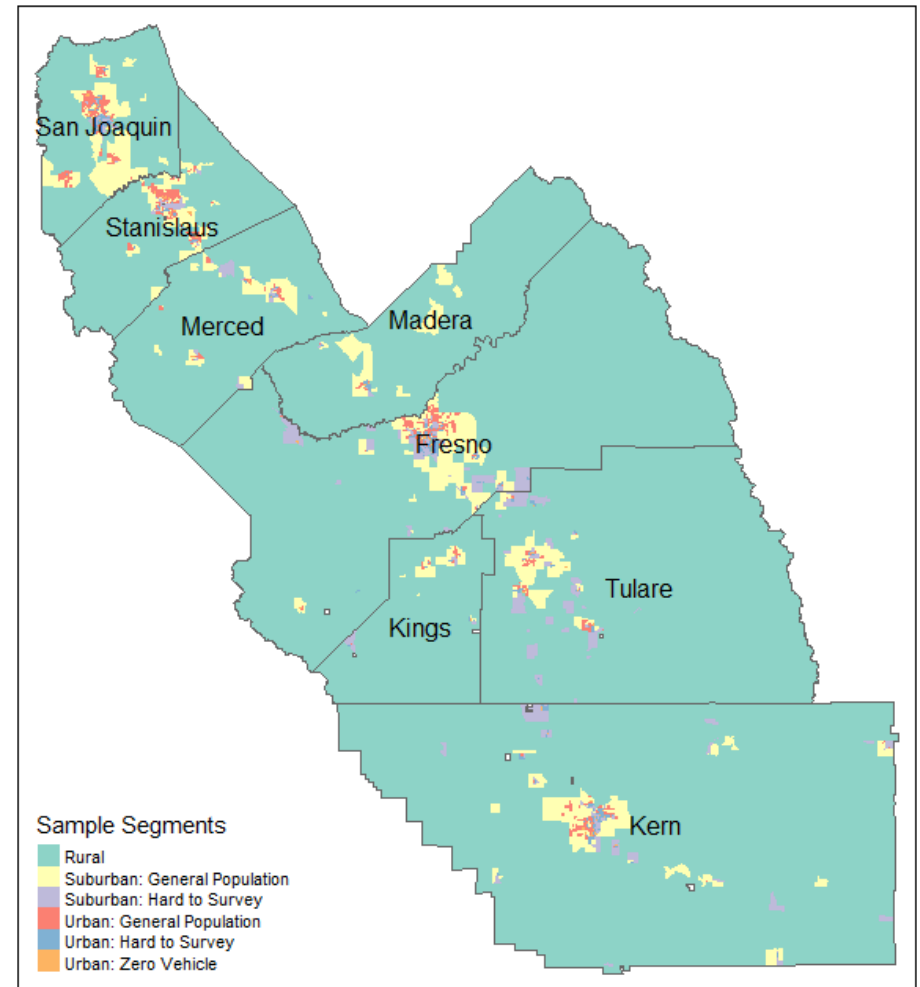
ABS Approach

- RSG geographically stratified the sample using Census Block Group data from the most recently available 2015-2019 American Community Survey 5-year estimates (ACS).
- The most detailed way to stratify the sample is to use Census Block Groups (BGs), which are the smallest geography for which most Census and ACS tables are publicly available. Each BG generally contains between 600 and 3,000 people. According to this ACS data, the region contains 2,310 BGs.



Oversampling

- RSG oversampled rural, suburban, and urban sample segments for historically hard-to-survey populations including residents who are Hispanic, people of color (POC), or lower income.
- In the Urban segment, there is also a targeted oversample for communities with a higher share of zero-vehicle households.



County Targets

COUNTY TARGETS & FINAL COMPLETED HOUSEHOLD SURVEYS

COUNTY	TARGETS	COMPLETED HOUSEHOLDS
Fresno	1,599	1,618
Kern	1,425	1,658
Kings	248	292
Madera	242	354
Merced	419	516
San Joaquin	1,198	1,259
Stanislaus	880	913
Tulare	710	796
TOTAL	6,720	7,406

Data Collection Approach

RECRUITMENT



Mailed Invitation Materials

- Address-based sampling was used by drawing a random sample of addresses from all residential addresses in the survey region.
- An invitation letter was sent to sample addresses followed by a reminder postcard.

PARTICIPATION

Informational Website

- Provided participation modes and links to the survey and smartphone app, rMove.
- Answers frequently asked questions

Call Center

- Participation via telephone in multiple languages
- Answer participant questions

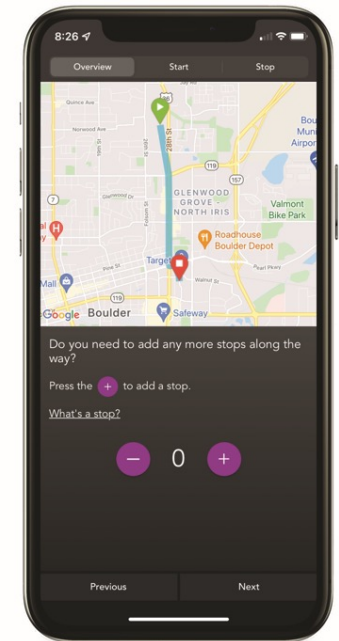
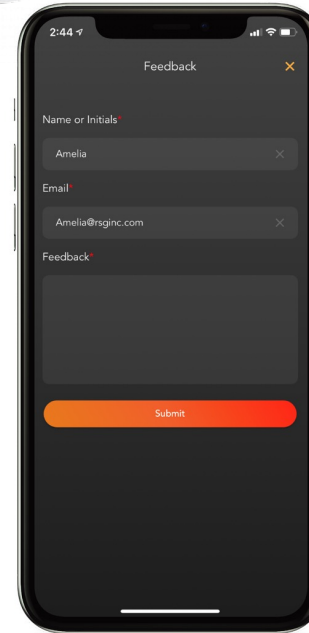
Invitation Materials

The collage displays three key components of the data collection approach:

- Letterhead:** A formal letter from the Central California Travel Survey, signed by Diane Nguyen, Executive Director of the San Joaquin Valley Regional Planning Agencies' Directors' Committee. It lists participating agencies from San Joaquin, Fresno, Kings, and Madera counties.
- Survey Postcard:** A colorful postcard titled "TELL US HOW YOU GET AROUND" that includes a QR code, a list of transportation modes (bicycle, car, bus, train, wheelchair), and a "RECEIVE A \$20-\$35 GIFT CARD AS A THANK YOU FOR YOUR TIME" offer. It also features a Spanish translation of the survey title.
- Survey Website:** A screenshot of the Central California Travel Survey website, showing a "GET STARTED TODAY" section with options to download the app or sign up online, a "FREQUENTLY ASKED QUESTIONS" section, and a map of the survey region.

Smartphone App Participation

- Customized answer choices for each household
- Trip validation and editing
- User can add, split, and merge trips
- In-app proxy reporting for children
- Respondent “nudging” through reminder notifications
- Ability to ask questions and provide feedback in the app




150k+
Persons


500k+
Days of Data


2 million+
Trips


10+
Languages

Data Collection Summary



Data Collection Summary

SURVEY RESULTS



7,406
HOUSEHOLDS

Unweighted Records



19,084
PERSONS

Unweighted Records



13,186
VEHICLES

Unweighted Records



42,567
TRAVEL DAYS

Unweighted Records



150,012
TRIPS

Unweighted Records

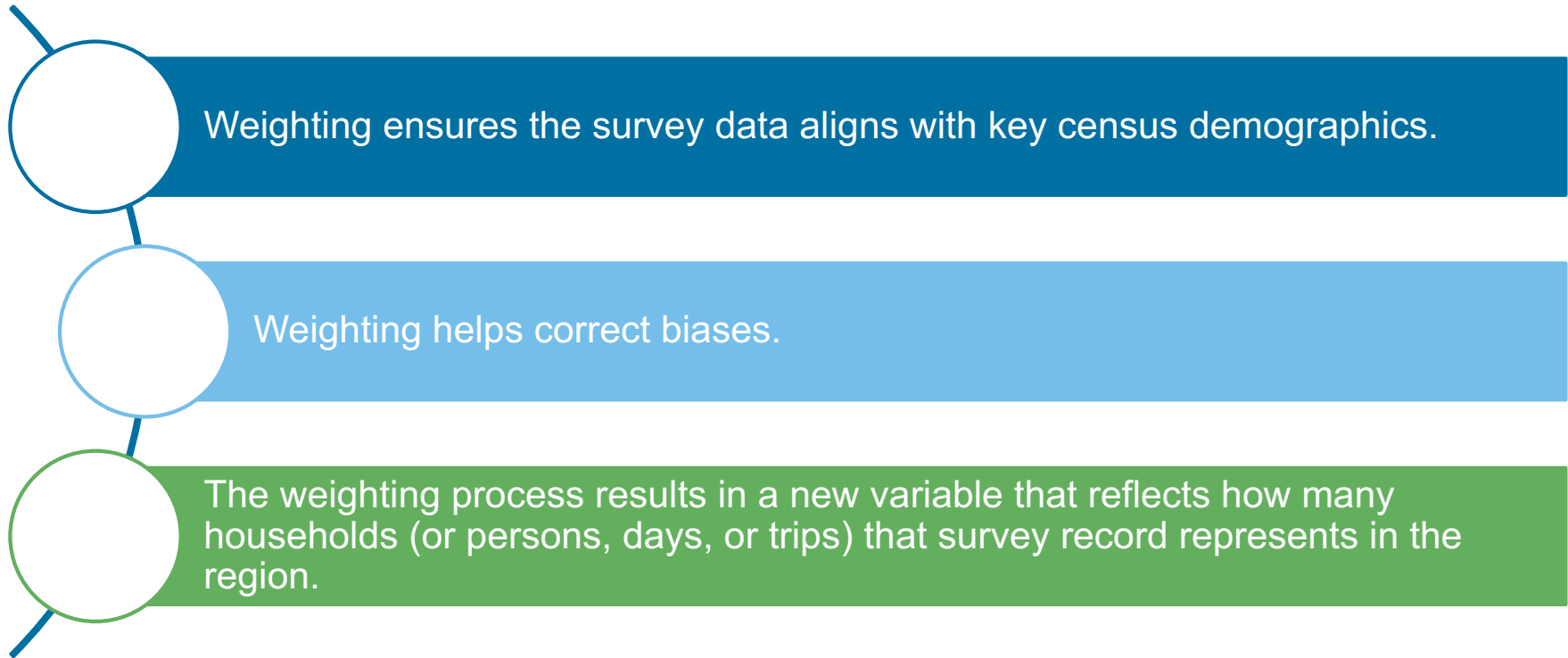


2,077,228
LOCATIONS

Unweighted Records

- Smartphone participants completed up to a 7-day travel diary.
- Online and call center participants completed a 1-day travel diary.
- A proxy adult was asked to report travel for 1 day for children under age 18, regardless of participation mode.
- Same questionnaire was used for smartphone, online, and call center participants.
- Survey was available in English and Spanish, with call center support for additional languages.

Data Weighting Overview



Key Survey Results



Trip Analysis

PERSON TRIPS ON WEEKDAYS (TUESDAY – THURSDAY) BY COUNTY (UNWEIGHTED AND WEIGHTED)

COUNTY	UNWEIGHTED COUNT	WEIGHTED COUNT
Fresno	16,121	3,537,447
Kern	18,187	3,415,856
Kings	3,197	557,999
Madera	4,178	563,874
Merced	5,780	1,020,892
San Joaquin	12,811	2,638,982
Stanislaus	9,051	1,879,518
Tulare	9,184	1,925,916
TOTAL	78,509	15,540,485

Weekday Trip Rate

PERSON AND HOUSEHOLD WEEKDAY TRIP RATES BY COUNTY (WEIGHTED)

COUNTY (n = 78,509)	PERSON TRIP RATE	HOUSEHOLD TRIP RATE
Fresno (n = 16,121)	3.9	11.4
Kern (n = 18,187)	4.4	12.7
Kings (n = 3,197)	4.2	12.7
Madera (n = 4,178)	3.9	12.5
Merced (n = 5,780)	4.0	12.8
San Joaquin (n = 12,811)	3.8	11.5
Stanislaus (n = 9,051)	3.8	10.8
Tulare (n = 9,184)	4.3	13.7
TOTAL	4.0	12.0

Travel Mode

TRAVEL MODE BY COUNTY (WEIGHTED %)

COUNTY	FRESNO	KERN	KINGS	MADERA	MERCED	SAN JOAQUIN	STANISLAUS	TULARE	TOTAL
<i>Unweighted (n)</i>	16,121	18,189	3,197	4,178	5,780	12,811	9,051	9,184	78,509
Walk	6.2%	6.1%	7.3%	4.5%	6.7%	8.5%	7.5%	5.3%	6.6%
Bike or e-bike	1.1%	0.5%	0.1%	0.2%	0.2%	0.4%	1.2%	0.5%	0.6%
Taxi	0.0%	0.0%	0.1%	0.3%	0.0%	0.1%	0.1%	0.0%	0.1%
Smartphone-app ride hailing	0.1%	0.4%	0.6%	0.0%	0.3%	0.5%	0.1%	2.1%	0.5%
Vehicle	90.6%	91.2%	88.5%	93.9%	91.4%	88.6%	88.6%	88.4%	90.0%
School bus	0.5%	0.7%	1.2%	0.8%	0.1%	0.2%	0.2%	0.1%	0.4%
Shuttle	0.0%	0.1%	0.3%	0.0%	0.0%	0.1%	0.2%	0.3%	0.1%
Transit	0.6%	0.5%	1.0%	0.1%	0.6%	0.7%	1.5%	0.6%	0.7%
Long-distance passenger	0.0%	0.0%	0.0%	0.0%	0.0%	0.2%	0.0%	0.0%	0.1%
Other mode	0.9%	0.5%	0.9%	0.2%	0.6%	0.7%	0.7%	2.6%	0.9%
TOTAL	100%	100%	100%	100%	100%	100%	100%	100%	100%

Trip Purpose

TRIP PURPOSE BY COUNTY (WEIGHTED %)

COUNTY	FRESNO	KERN	KINGS	MADERA	MERCED	SAN JOAQUIN	STANISLAUS	TULARE	TOTAL
<i>Unweighted (n)</i>	16,121	18,189	3,197	4,178	5,780	12,811	9,051	9,184	78,509
Home	31.2%	30.9%	32.6%	31.1%	28.6%	32.5%	29.3%	27.9%	30.6%
Work	13.8%	14.2%	11.6%	12.9%	14.7%	13.5%	13.1%	13.5%	13.6%
School	4.7%	3.6%	5.7%	3.2%	6.7%	4.4%	3.5%	4.6%	4.3%
Pick up / Drop off	14.2%	15.5%	14.7%	15.4%	16.1%	13.6%	13.0%	20.9%	15.3%
Shopping	11.4%	11.6%	7.9%	12.1%	13.8%	10.7%	11.3%	10.9%	11.3%
Meal	7.8%	7.3%	7.4%	6.9%	5.3%	7.2%	8.2%	6.5%	7.3%
Social / Recreation	6.3%	6.9%	6.5%	5.3%	4.5%	6.7%	7.9%	6.0%	6.5%
Errand	4.5%	5.1%	8.1%	5.4%	4.3%	4.9%	6.9%	4.4%	5.1%
Overnight	3.6%	3.1%	2.1%	6.1%	3.9%	2.9%	3.1%	2.5%	3.2%
Other purpose	2.4%	1.9%	3.4%	1.6%	2.0%	3.5%	3.8%	2.8%	2.7%
TOTAL	100%	100%	100%	100%	100%	100%	100%	100%	100%

Telework Frequency

TELEWORK FREQUENCY BY COUNTY (WEIGHTED %, EMPLOYED ADULTS)

COUNTY	FRESNO	KERN	KINGS	MADERA	MERCED	SAN JOAQUIN	STANISLAUS	TULARE	TOTAL
<i>Unweighted (n)</i>	1,674	1,634	315	390	563	1,401	909	826	7,712
6-7 days a week	2.3%	3.9%	3.4%	2.9%	3.9%	4.0%	1.3%	4.0%	3.2%
5 days a week	11.8%	7.9%	6.1%	10.0%	12.1%	10.9%	6.8%	10.8%	9.8%
4 days a week	1.6%	2.2%	1.2%	8.5%	4.0%	3.6%	5.1%	2.6%	3.1%
2-3 days a week	10.1%	8.5%	2.7%	7.0%	9.6%	8.1%	10.5%	5.0%	8.5%
1 day a week	4.3%	3.2%	3.0%	3.6%	2.4%	3.2%	5.3%	7.2%	4.1%
1-3 days a month	3.2%	3.7%	1.1%	6.5%	2.0%	2.8%	3.1%	4.4%	3.3%
Less than monthly	6.8%	8.0%	7.2%	2.6%	7.3%	5.7%	6.2%	7.5%	6.7%
Never	60.0%	62.4%	75.3%	58.9%	58.7%	61.7%	61.7%	58.5%	61.2%
TOTAL	100%	100%	100%	100%	100%	100%	100%	100%	100%



Contacts

MICHELLE LEE
SENIOR DIRECTOR

Michelle.Lee@rsginc.com

+1 802 359 5591

MELANIE MUNROE
SENIOR CONSULTANT

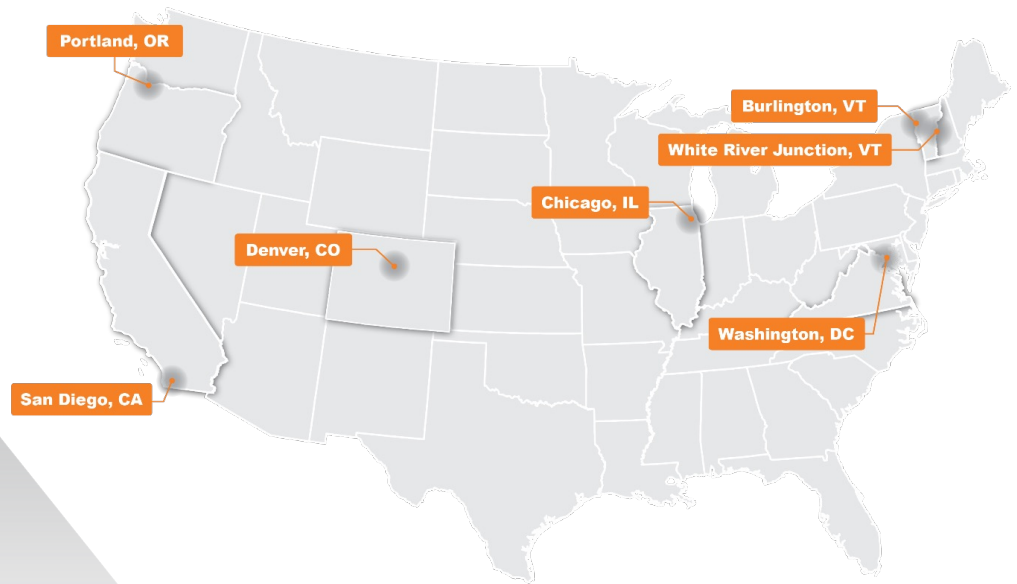
Melanie.Munroe@rsginc.com

+1 802 295 4999

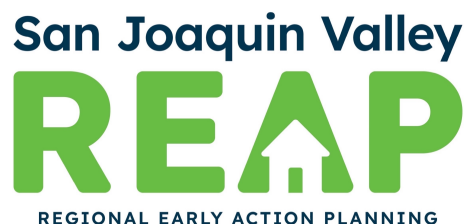
JACOB MOORE
LEAD ANALYST

Jacob.Moore@rsginc.com

+1 202-987-3718



www.rsginc.com



**REAP Update
July 13, 2023**

- **Technical Assistance** to Valley jurisdictions is available utilizing the following consultants:

- Mintier Harnish
- Precision Engineering
- Rincon Consultants (AFFH)
- VTA (AFFH)
- Estolano (AFFH)

TA contracts were not extended to AECOM and Quad Knopf for FY 2023-24.

15 jurisdictions have requested technical assistance to date: *Arvin, McFarland, Atwater, Kingsburg, Bakersfield, Clovis, Stanislaus County, Hughson, Wasco, Stockton, Madera County, Madera, Merced County, Selma, and Lodi.*

Jurisdictions can request technical assistance via a web site portal:

<https://sjvcogs.org/reap/reap-technical-assistance/>

- **Additional Valleywide work efforts include:**
 - Comprehensive Housing Report; status – complete and available on-line.
 - Housing Element Data Sets; status – complete and available on-line.
 - ADU Template Program; status – complete, ongoing TA.
 - Guide to Recent California Housing Laws and Policies Affecting Local Land-Use Planning; status – complete and available on-line.
 - RHNA Insights GIS Tool (HDR); status – complete, licensing arrangements are pending Fresno COG Board approval.
 - Condo Construction Analysis (EPS); status – draft of complete study completed.
 - Inclusionary Housing Analysis (EPS); status – draft of complete study completed.
 - Water Supply/SGMA Analysis (Mintier/Rincon Consultants); status- work in process.
 - REAP Workshop Series; status – ongoing.
 - ***Next workshop in August (inclusionary housing) and October (condo construction).***
- **The final and third REAP funding application** has been approved by HCD. An amended master funding agreement has been signed by Fresno COG. HCD verbally has agreed to will allow for a 50 percent invoice for all remaining REAP 1 funding. Funding from HCD is imminent.
- **REAP TAC Committee** meeting was held on June 13th. The July TAC meeting occurred on July 12th.